



**FD3S Lexan Window Kit**  
Instruction Manual Rev. 01

**Document Revisions**

Revision	Date	Description
Rev. 01		Unpublished Copy



## Table of Contents

<u>1. Overview:</u> .....	3
<u>2. Tools Required:</u> .....	3
<u>3. Package Contents:</u> .....	3
Standard Window Kit:.....	3
Window with Slider Kit:.....	4
<u>4. Installation:</u> .....	4
Door Panel Removal:.....	4
Stock Window and Motor Removal:.....	5
Installing Lexan Window Kit:.....	5
Installing Slider Kit:.....	6

**\*\*DISCLAIMER\*\*** All Bubble Tech Products are designed and intended for **off-road use only** and may not be street legal in certain states. Bubble Tech advises every user to check with Federal, State and Local laws prior purchase and installation of our products on a street car.

---



---

Upon use of our products, the user agrees to hold responsibility to familiarize themselves with information concerning the correct use, safety, and limitations of these products. We are not responsible for any misuse of any of our products or damage to your own vehicle by following this manual and installation of Bubble Tech products.

## **1. Overview:**

A detailed guide for installation of the Bubble Tech Lexan Window Kit.

Difficulty level: 1 out of 5

Time Required: 30-90 minutes per side

## **2. Tools Required:**

- Phillips Screwdriver
- Flat head Screwdriver or pick
- Plastic pry bar
- 10mm socket and ratchet/wrench
- 4mm Allen key – Preferably ball head
- Utility knife or Scissors

## **3. Package Contents:**

### Standard Window Kit:

- (1) Lexan window
- (4) Regular top brackets
- (2) Long top brackets (Indicated by silver circle on backside)
- (2) Bottom brackets (Left and Right)



- (1) Adhesive foam strip
- (8) M6x1.0 nuts
- (6) M6x1.0 x 12mm Button head screws
- (2) M6x1.0 x 8mm Button head screws
- (4) M6x1.0 x 12mm Flange bolts

### **Window with Slider Kit:**

All of the above and:

- (2) Inner slider tracks
- (2) Outer slider tracks
- (1) Slider window
- (8) M6x1.0 nuts
- (8) M6x1.0 x 16mm Button head screws
- (8) M6 Washers

## **4. Installation:**

(TIP: Lower window half way for easier removal later on)

### **Door Panel Removal:**

1. Gently pry inner triangle and upper door handle plastic covers to remove.
2. Pry up the cover in the door cup to reveal hidden screw- Remove screw and pry the door cup out.
3. Remove the (3) screws holding the door panel on. (2 on the inside edge near the hinge and 1 on the outside edge)
4. Passenger Side- Pry window switch to pop out and reveal hidden screw - Pry screw cover on the center of the door panel to reveal hidden screw - Remove

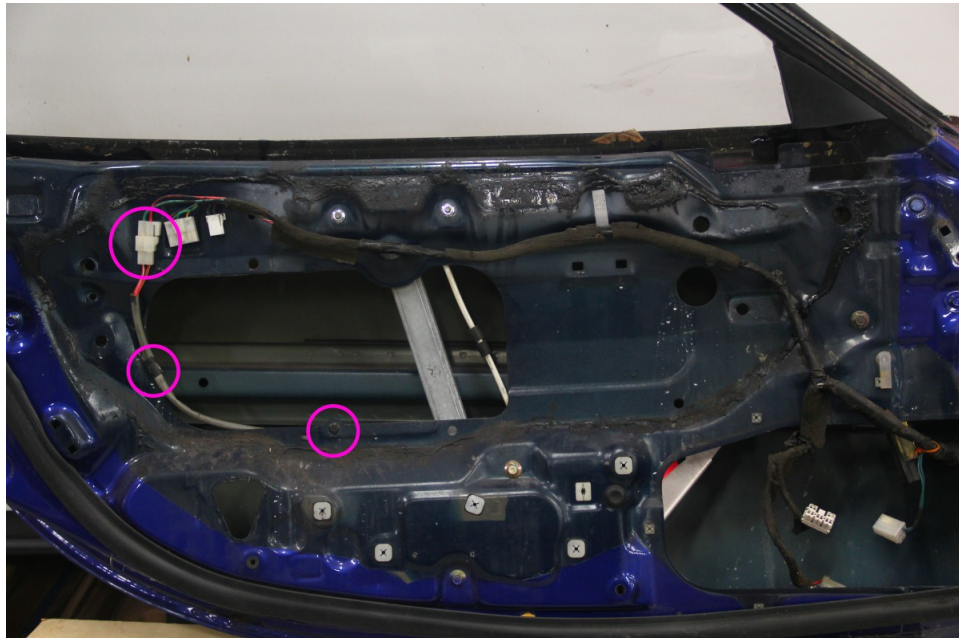
both screws.

Drivers Side- Skip this step.

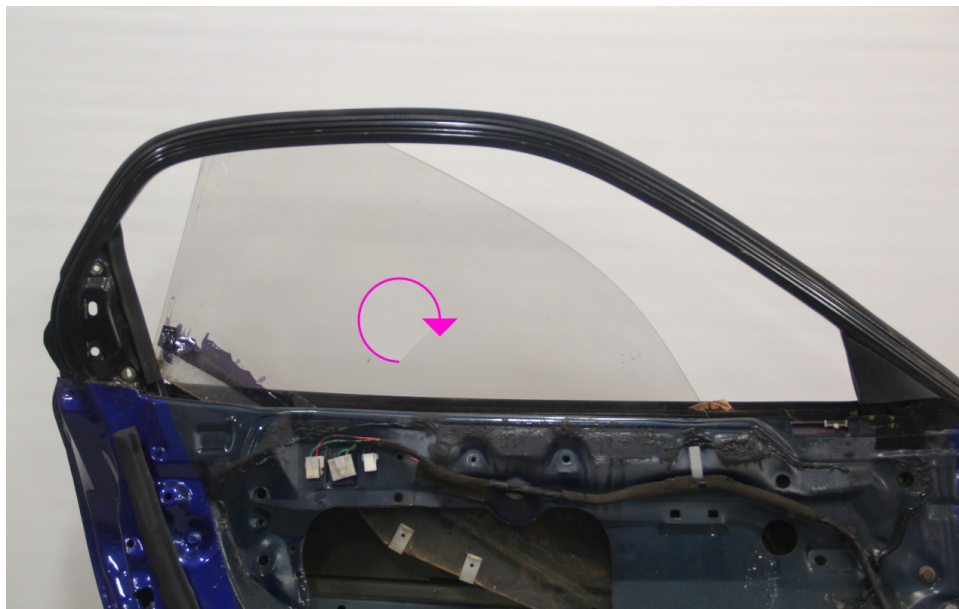
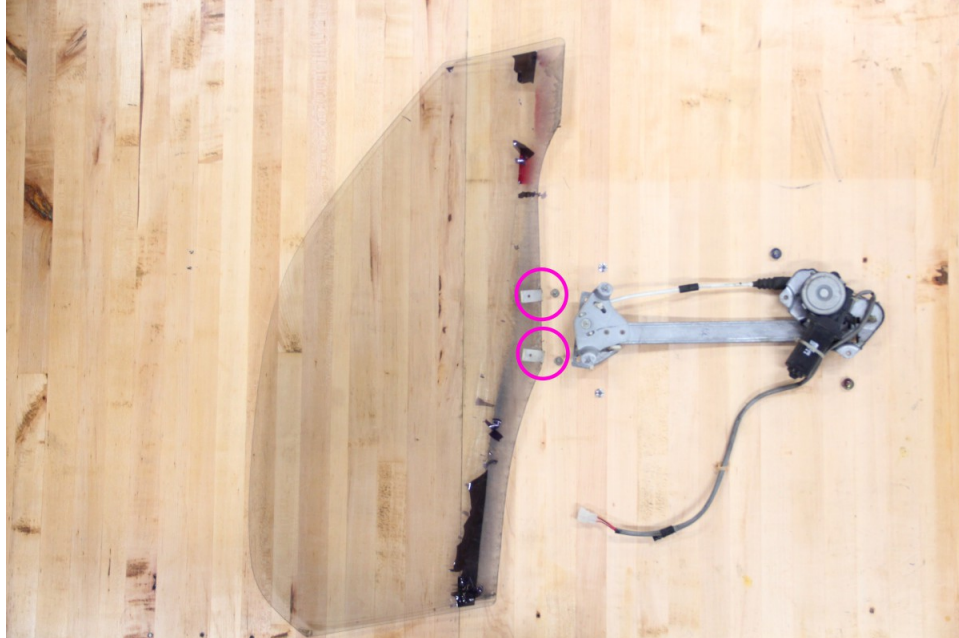
5. Gently pull the door panel towards you (to pop the fasteners loose) – unplug any connectors attached to the door panel and then lift and remove the door panel up (clearing the locator pins).

### **Stock Window and Motor Removal:**

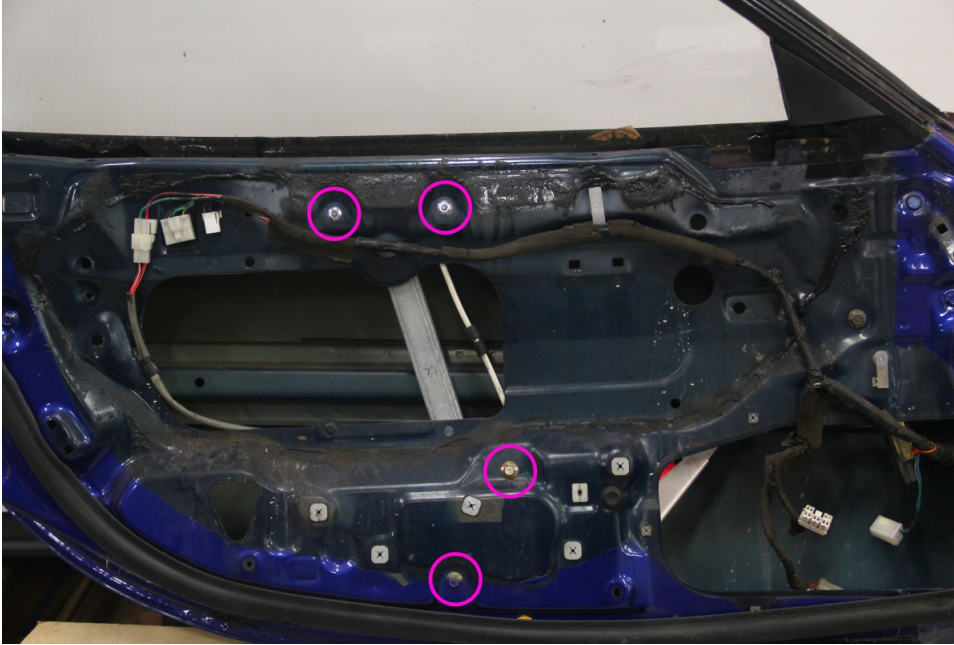
1. Disconnect window motor connector and clips securing wiring to door frame



2. Use the 10mm to remove the (2) bolts freeing the window glass from the motor  
– Slightly rotate the window and pull the window up and out of the tracks.



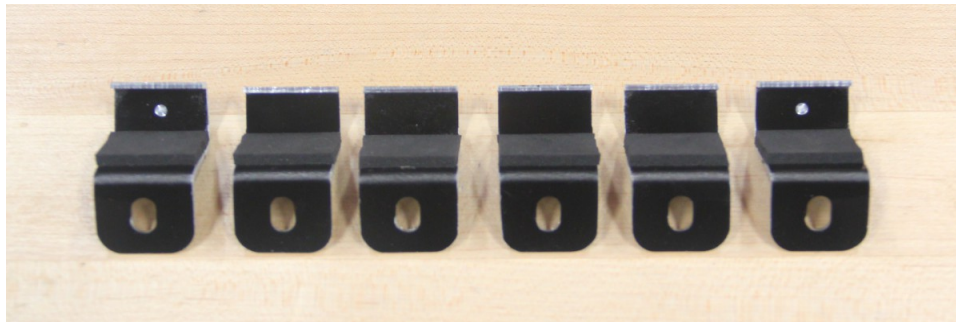
3. To remove the motor use the 10mm for (2) nuts on top and (2) bolts on bottom – remove motor.



### **Installing Lexan Window Kit:**

(Driver and Passenger side are exact same installation process just mirrored)

1. Apply adhesive foam onto the top brackets – Cut excess and repeat on all (6).  
**NOTE:** The silver dots on (2) of the brackets go on the outsides – Displayed is the correct orientation.



2. Angle Lexan Window into rubber window tracks and rotate Lexan into upright position tucking the top edge under weather seal.  
**TIP:** The bottom inside edge may pop out of the track when rotating the Lexan in to place preventing it from sitting correctly, gently apply pressure aligning it back into place.
3. Attach the top brackets, using the 12mm long button head screws and nuts to secure the Lexan in place – leave finger tight.

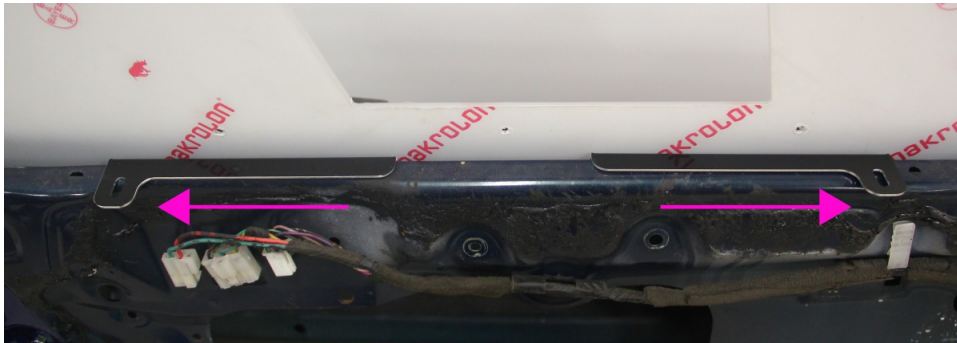
Size	Description	Location
Regular	No markings	Use on (4) inner locations
Long	Silver Dot on inside clamp	Use on (2) outer locations



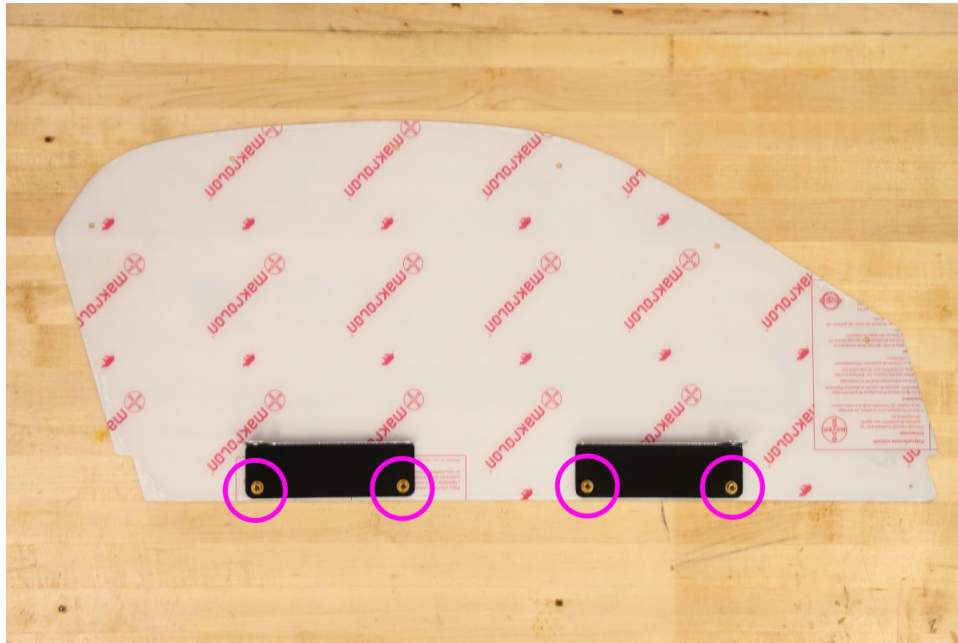


4. Attach the bottom brackets (Flange side facing out) by feeding the 8mm long button head screw from the backside of the door frame into the bottom bracket. Screw on a nut finger tight. Repeat for other side.

**NOTE:** On the side closest to the door handle, there is an indentation in the door skin that may interfere with a standard Allen key (ball head key will be much easier) however you just need the Allen key to feed the screw through the hole and then you can reach behind with your finger to hold the screw in place while you finger tighten the nut.

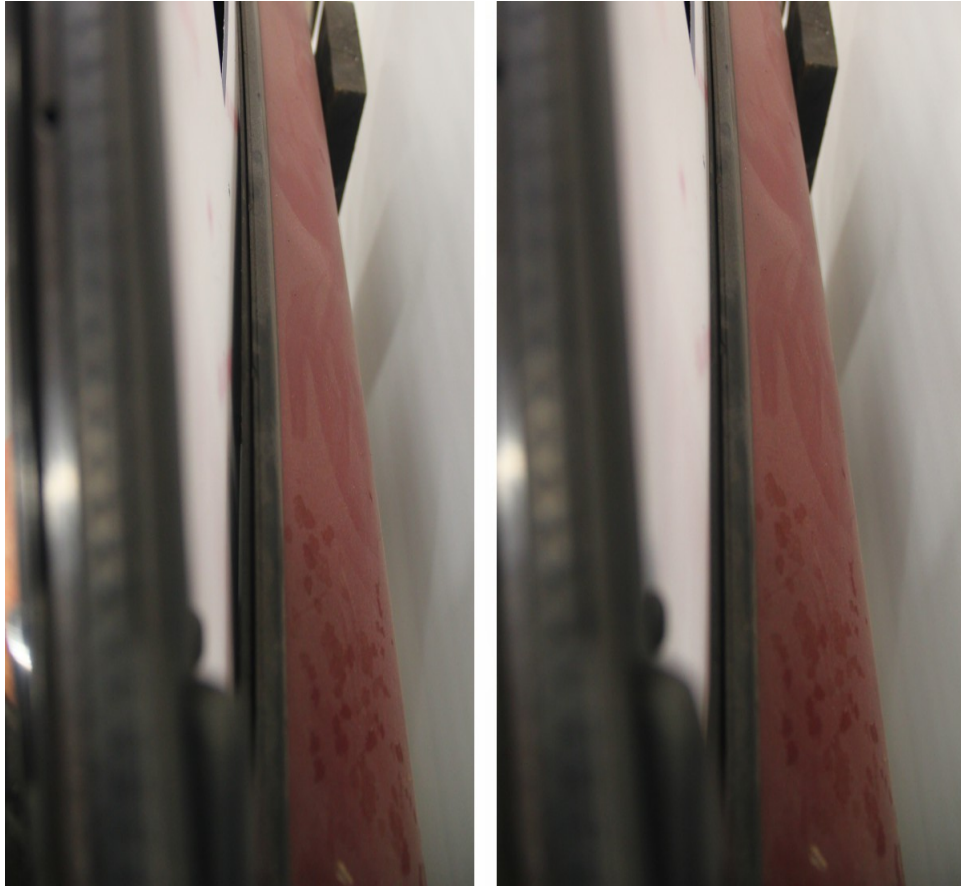


5. Attach bottom bracket to the Lexan with the (4) Flange bolts – finger tight.



6. Go back and tighten the screws on the top brackets.  
**TIP:** Apply pressure pushing the Lexan upwards while tightening the screws to keep a better seal.
7. Go back and tighten the screws that attach the Lexan to the bottom brackets.

- 
8. Apply some pressure pushing the Lexan outwards, enough to touch the bottom weather seal on the outside touches, and tighten the screw holding the bottom bracket to the door frame.





***Installing Slider Kit:***

1. Configure your Slider orientation.
2. Install bottom track in this orientation:  
Window > Washer > Inner Track > Outer Track > Nut
3. Place Slider window into track.
4. Install top track in this orientation:  
Window > Washer > Inner Track > Outer Track > Nut